

THE FRANCIS FLOOR PLAN



ABOUT THE FRANCIS

GENERAL

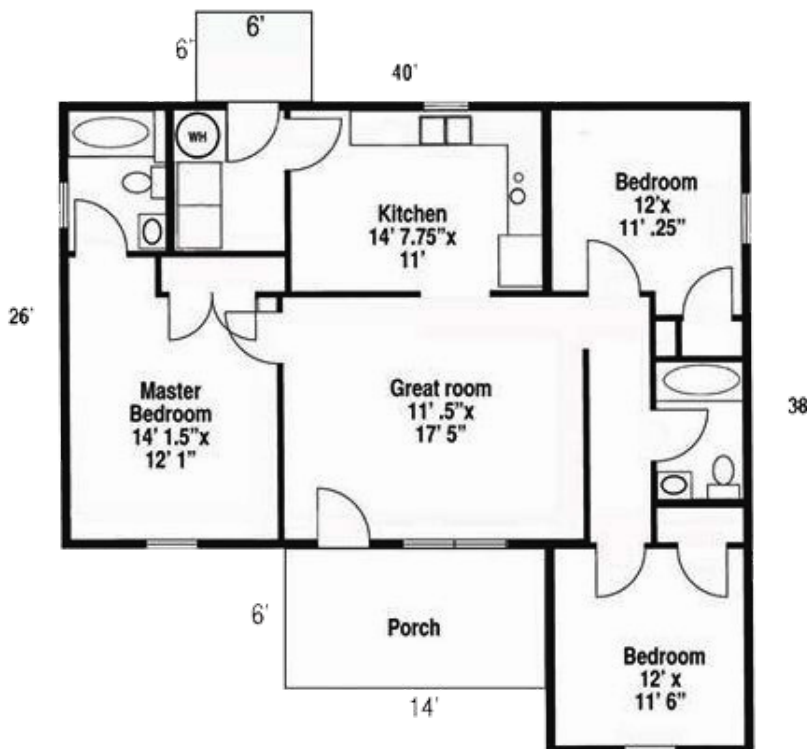
- 1,184 sq. ft.
- 3 Bedrooms
- 2 Bathrooms
- 6' x 14' Covered Front Porch
- 6' x 6' Back Stoop

FEATURES

- 2 Full Bathrooms with Tub/Shower Combos
- Large Eat-In Kitchen
- Room for Full-Size Washer & Dryer

HIGHLIGHTS

- Large Master Bedroom, with the 2nd & 3rd Bedrooms of the Same Size
- Open, Spacious Great Room



ABOUT THE DESIGN

The Francis has an attractive front elevation that opens into a large great room. This home can be a traditional 26' floor plan or a more modern, open floor plan.

