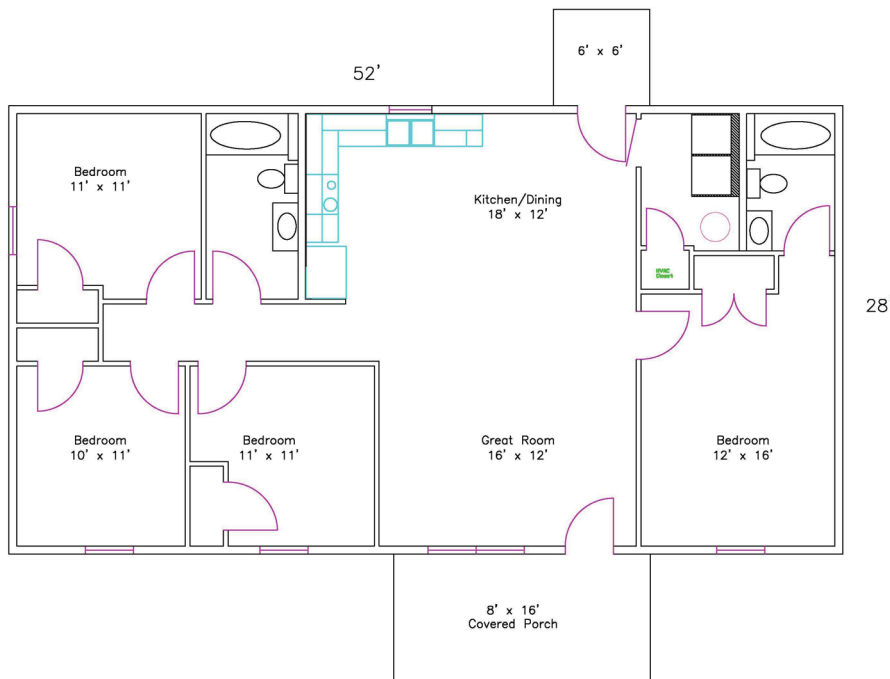


THE MAPLE FLOOR PLAN



ABOUT THE MAPLE



GENERAL

- 1,456 sq. ft.
- 4 Bedrooms
- 2 Bathrooms
- 8' x 16' Covered Front Porch
- 6' x 6' Back Porch

FEATURES

- Large Master Suite with Full Bath & Walk-In Closet
- Large Covered Front Porch
- Room for Hidden Washer & Dryer Combo

HIGHLIGHTS

- Modern Open Floor Plan
- Spacious Kitchen
- Master Suite is Separated from Other Bedrooms

ABOUT THE DESIGN

The Maple is one of our larger floor plans, featuring a spacious Master Suite that is separated from the other bedrooms for added privacy. The plan boasts a large kitchen/dining area and Great Room. The home also has a large covered front porch and modest back porch.

