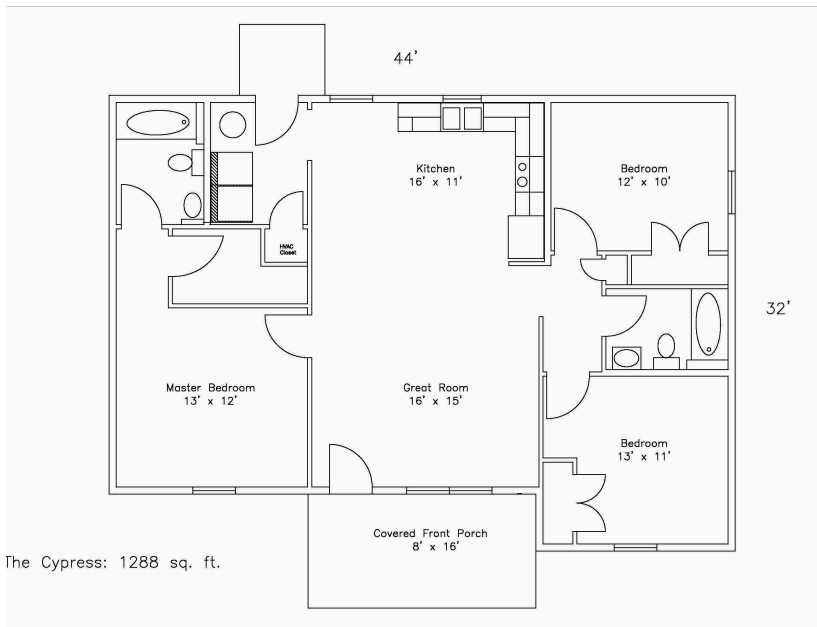


# THE CYPRESS FLOOR PLAN



## ABOUT THE CYPRESS



## ABOUT THE DESIGN

The Cypress has an open floor plan living space with a spacious Master Suite and great room! Features minimum hallway space for maximum living area. Master Suite - complete with its own bathroom & walk-in closet - is on the opposite side of the home from the other 2 bedrooms.

### GENERAL

- 1,288 sq. ft.
- 3 Bedrooms
- 2 Bathrooms
- 8' x 16' Covered Front Porch
- 6' x 6' Back Stoop

### FEATURES

- Large Closets in All 3 Bedrooms
- Minimum Hallway Space for Maximum Living Area
- Mud Room with Separate Entrance

### HIGHLIGHTS

- Spacious Kitchen
- Large, Open Great Room
- 2 Full Baths - One with Tub/Shower Combo; the Other with a Stand-Up Shower

