

THE STACY OPEN FLOOR PLAN



ABOUT THE STACY OPEN



GENERAL

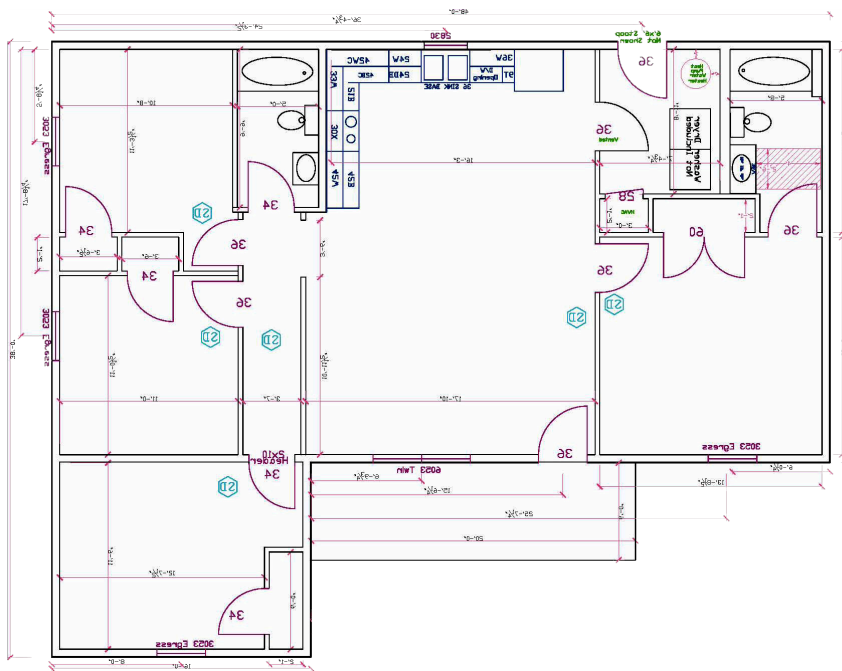
- 1,440 sq. ft.
- 4 Bedrooms
- 2 Bathrooms
- 6' x 20' Covered Front Porch
- 6' x 6' Back Stoop

FEATURES

- Large Open Great Room & Kitchen/Dining Area
- Spacious Master Suite
- Utility/Mud Room Has Its Own Separate Entrance

HIGHLIGHTS

- Master Suite Occupies Its Own Side of the Home, Away from Other 3 Bedrooms
- Both Bathrooms Feature Tub/Shower Combos
- Ample Closet Space



ABOUT THE DESIGN

Featuring a popular open concept design, the Stacy Open boasts a large living space, with the living room seamlessly connected to the dining area, which creates a large airy space with minimal wall barriers, maximizing the feeling of spaciousness. The home has 4 separate bedrooms, with the Master Suite set away from the other bedrooms, offering privacy & ample sleeping space for a larger family.

