

THE CORNETT FLOOR PLAN

ABOUT THE CORNETT



GENERAL

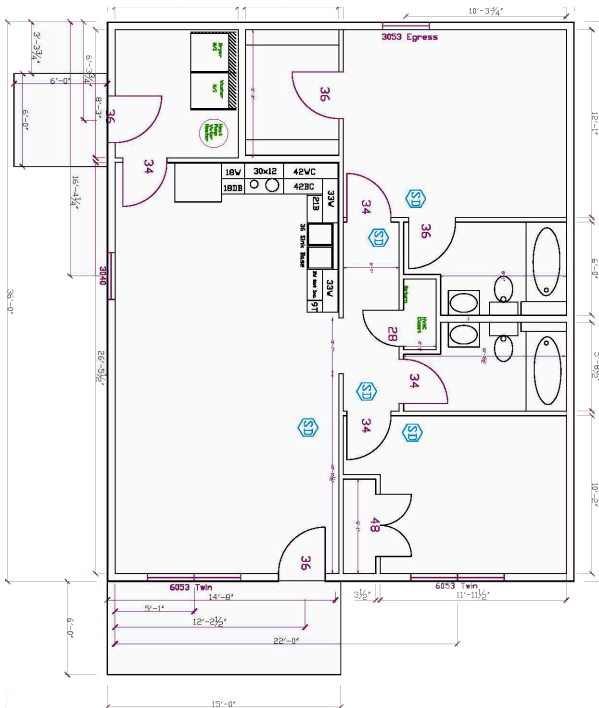
- 1,080 sq. ft.
- 2 Bedrooms
- 2 Bathrooms
- 6' x 15' Covered Front Porch
- 6' x 6' Back Stoop

FEATURES

- Walk-In Closet & Full Bath in Master Bedroom
- Open Great Room & Kitchen/Dining Area

HIGHLIGHTS

- Large Great Room & Kitchen
- Spacious Bedrooms with Ample Closet Space
- Energy Efficient



ABOUT THE DESIGN

The Cornett has a large great room and kitchen space for maximized living area. The two bedrooms are roughly the same size, with the Master Bedroom located on the back side of the home for added privacy. Master Bedroom includes a walk-in closet and full bath. The 2nd bedroom has easy access to the other full bath from the hallway.

