

THE DEBORAH FLOOR PLAN



ABOUT THE DEBORAH



GENERAL

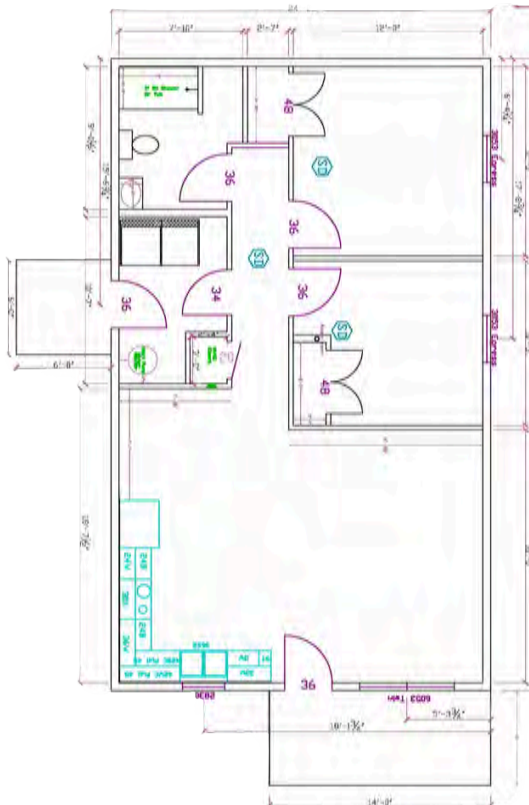
- 960 sq. ft.
- 2 Bedrooms
- 1 Bathroom
- 6' x 14' Covered Front Porch
- 6' x 6' Back Stoop

FEATURES

- Open Concept Great Room & Kitchen/Dining Area
- Tub/Shower Combo in Bathroom

HIGHLIGHTS

- Ample Closet Space
- Utility Room with Separate Entrance
- Energy Efficient



ABOUT THE DESIGN

This home has a large, open concept Great Room and kitchen/dining area for maximum living space, two bedrooms with ample closet space, one bathroom with a tub/shower combo, and a utility room with its own separate entrance.

